



Thank you for purchasing Koso's Harley Davidson Speedometer. Before operating this unit, please read the instructions thoroughly and retain them for future reference.

## ⚠ Notice

1. This product only functions with DC12V.
2. Any damages caused by faulty installation shall be imputed to the users.
3. To avoid a short circuit from occurring, do not pull on or modify the wires during installation.
5. Disassembling the unit will void any warranty. Maintenance and repairs should be executed by our professionals only.

### SYMBOL DESCRIPTION:

⚠ Some procedures must be followed in order to avoid faulty installation.

**⚠ WARNING!** Some procedures must be followed to avoid damages from occurring to yourself and to others.

**⚠ CAUTION!** Some procedures must be followed to avoid damages from occurring to the vehicle.



FLASH



LIGHT ON

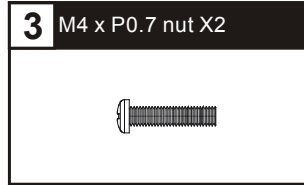
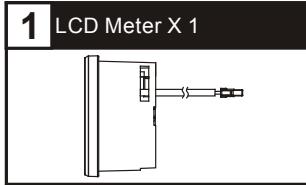


PRESS THE BUTTON ONE TIME



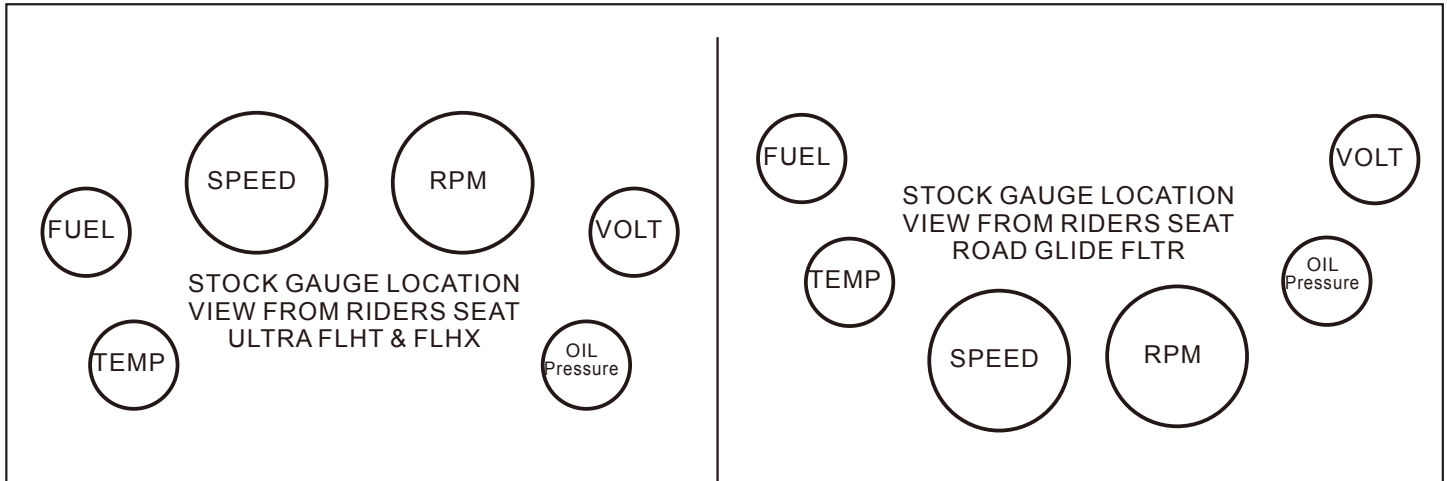
PRESS THE BUTTON 3 SECONDS

## 1 Accessories



**NOTE** Please contact your local distributor if the items received are not the same as the items listed above.

## 2-1 Gauge location



**NOTE** Gauge positioning and identification for 2004-2013 Harley-Davidson FLHT / FLHX / FLTR.

## 2-2 Disassembling Instructions



1. Disconnect the ground (-) (negative pole of the battery) from the vehicle's battery.



2. Remove the mounting screw and remove the fairing.



3. Disconnect the headlight connector.



5. Remove the mounting hardware.

6. Remove the meter from the inner fairing

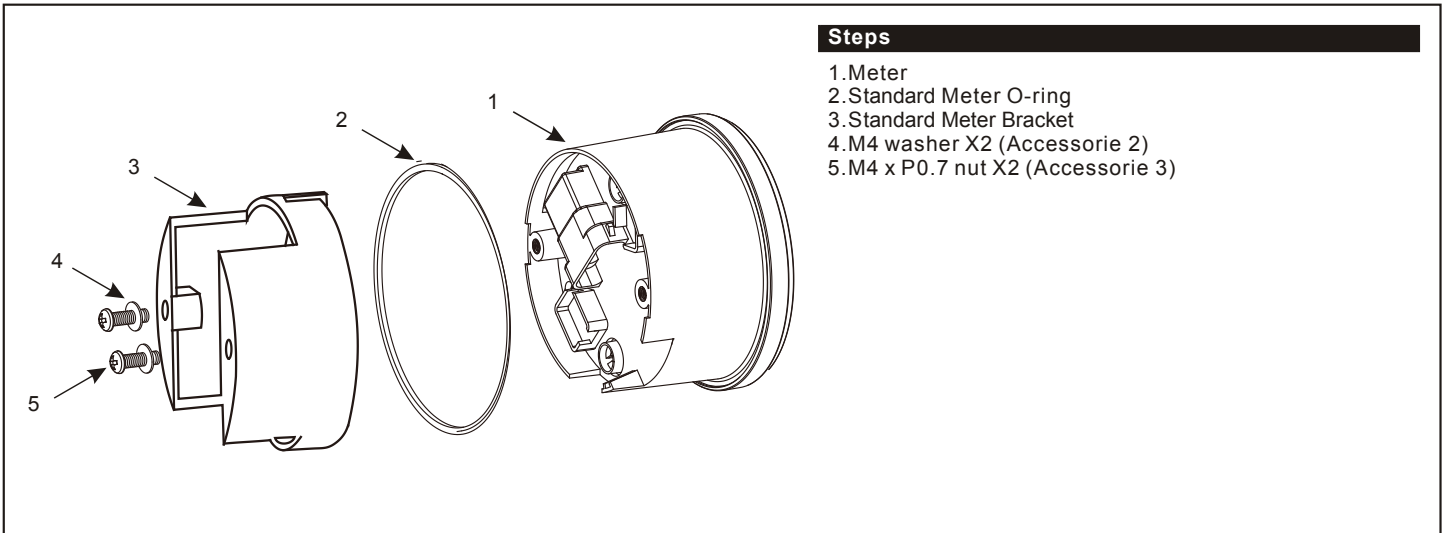


4. Disconnect the wiring from the Speedometer, tachometer, ambient temp. meter, volt meter, fuel meter, and oil pressure meter.

7. Replace the meter with the new KOSO version.

**NOTE** The installation will be the same procedure backwards

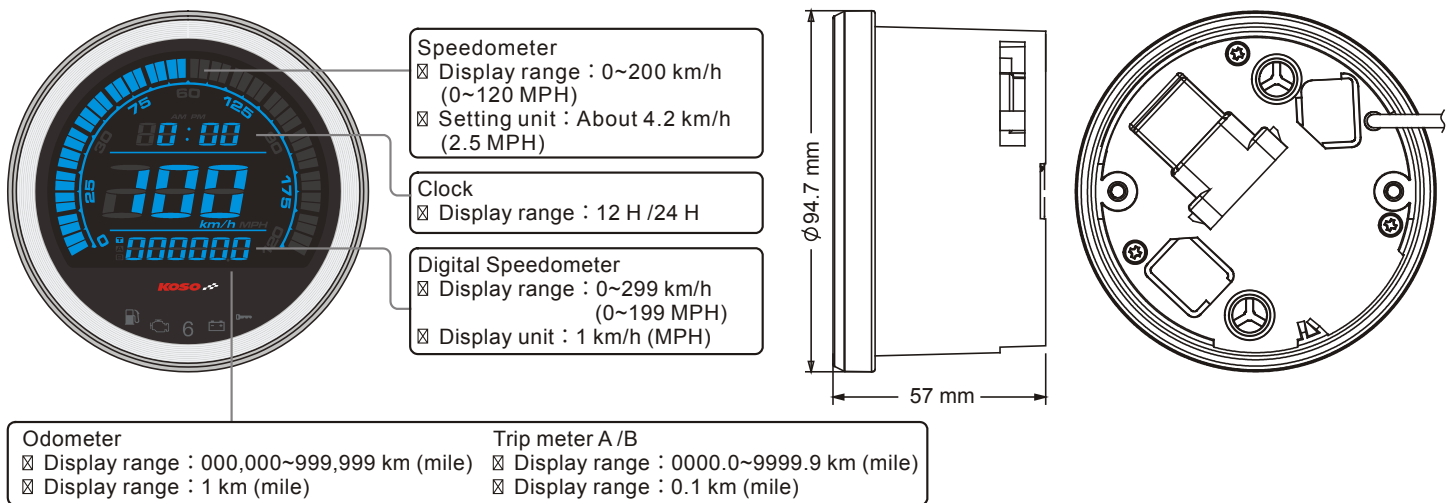
## 2-3 Installation instructions



### Steps

1. Meter
2. Standard Meter O-ring
3. Standard Meter Bracket
4. M4 washer X2 (Accessorie 2)
5. M4 x P0.7 nut X2 (Accessorie 3)

## 3 Overview



## 3-1 Settings Instructions

☒ Digital Speedometer	Display range : 0~299 km/h (0~199 MPH) Display unit : 1 km/h (MPH)	☒ Effective voltage	DC 12 V
☒ Speedometer	Display range : 0~200 km/h (0~120 MPH) Setting unit : About 4.2 km/h (2.5 MPH)	☒ Effective temperature range	-10~60 °C
☒ Odometer	Display range : 000,000~999,999 km (mile) Display range : 1 km (mile)	☒ Meter standard	JIS D 0203
☒ Trip meter A /B	Display range : 0000.0~9999.9 km (mile) Display range : 0.1 km (mile)	☒ Meter size	D94.7 X 55.8 mm
☒ Clock	Display range : 12 H /24 H Accuracy + / -4 seconds / Day	☒ Meter weight	
☒ Fuel	Display range : Fu-04 / Fu-08 Hd-04 / Hd-08	☒ Indicator light color	Fuel light (Yellow) Engine light (Yellow) Gear light (Green) Volt light (Red) Anti-Theft light (Red)
☒ Backlight color	Setting range:Blue / Red		

**NOTE** Design and specifications are subject to change without notice!

**NOTE** Please be advised this meter was programmed according original factory parameters. If the vehicle has been modified or customized and the parameters have been change, then the meter display might not be accurate

**NOTE** The backlight adjustment (brightness and color) must be done through the Speedometer housing with the communication harness.

## 4 Entering the settings

\* To enter the gauge settings mode, you must follow the steps below :

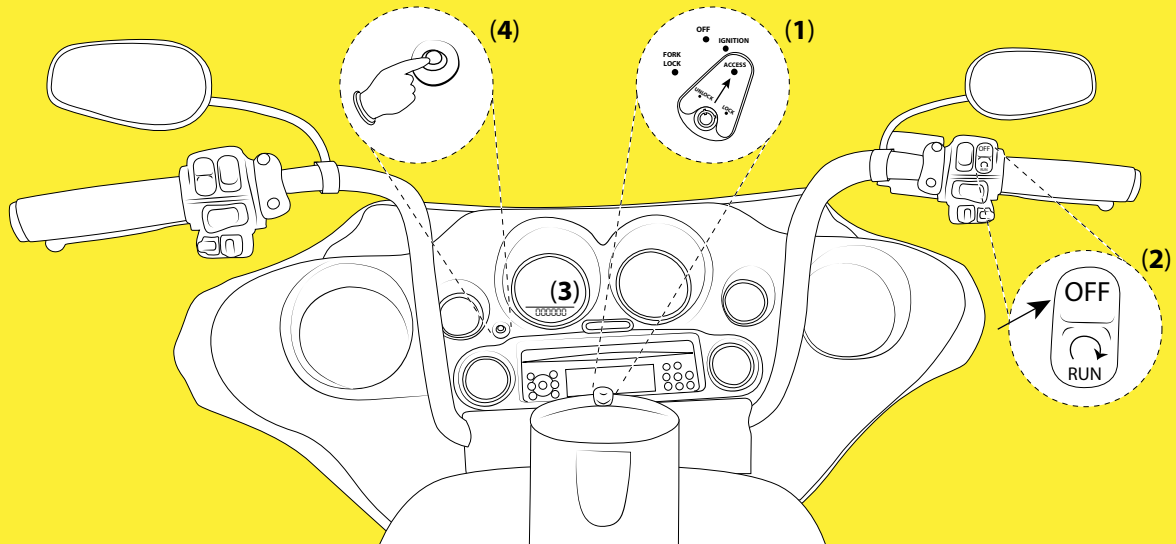
**A** : The key must be switched to ON/ACCESSORIES (1).

**B** : The Engine OFF/Run must be OFF (2).

**C** : The speedometer must be displaying ODOMETER (3).

**D** : Press and hold the Trip/Reset button down for 3 seconds to enter the settings (4).

**E** : Use the Trip/Reset button to navigate through the settings (4).



In the main screen, hold the button for 3 seconds to enter in the settings screen.



EX. The Speed unit setting is changed from km/h to MPH. Hold the button for 3 seconds to go back to the Speed unit settings screen.



### 4-1 Speed unit settings

Hold the button for 3 seconds to enter in the Speed unit settings screen.



In Speed unit settings screen, Press the button once to enter the Clock settings screen.



EX. To change the setting from km/h to MPH. Press the Adjust button to change the setting.

**NOTE** Default: km/h

**⚠** Now the default is flashing

**NOTE** Setting range: km/h or MPH.

**NOTE** The odometer & trip meter will change together with the speed unit.

### 4-2 Clock settings

Hold the button for 3 seconds to enter the Clock setting screen.





EX. To change the setting to 24 H  
Press the Adjust button to choose the  
setting number.

**NOTE** Default: 12 H.

⚠ Now the default is flashing

**NOTE** Setting range: 12 H / 24 H



EX. The Clock (H) setting is changed  
from 12 H to 24 H.  
Hold the button for 3 seconds to enter  
in the Clock settings screen.



EX. To change the setting to 10:00.  
Press the button to choose the setting  
number.

**NOTE** Default: 0 H.

⚠ Now the default is flashing

**NOTE** Setting range: 0~23 H.



EX. Now the setting is changed from  
0:00 to 10:00.  
Hold the button for 3 seconds to enter  
the minute setting.

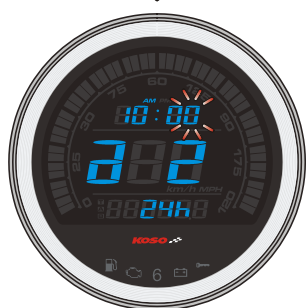
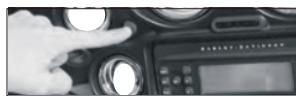


EX. To change the settings.  
Press the button to move to the digit  
you want to set.

**NOTE** Default: 0 minutes.

⚠ Now the default is flashing

**NOTE** Setting range: 00~59 minutes.



Press the button to choose the  
setting number.



EX. Now the setting is changed from  
10:00 to 10:05.  
Hold the button for 3 seconds to go  
back to the Clock settings screen.



Clock setting screen, Press the  
button once to enter the fuel type  
settings screen.



### 4-3 Fuel type setting

Hold the button for 3 seconds to  
enter the Fuel type setting screen.



EX. To change the setting from  
Hd-08 to Hd-04.  
Press the Adjust button to change the  
setting.

**NOTE** Default: Hd-08

⚠ Now the default is flashing

**NOTE**

Fu-04 (2004~2007 Model+KOSO Fuel Level Gauge)

Fu-08 (2008~2013 Model+KOSO Fuel Level Gauge)

Hd-04 (2004~2007 Model+ Stock Fuel Level Gauge)

Hd-08 (2008~2013 Model+ Stock Fuel Level Gauge)



EX. The Fuel type setting is  
changed from Hd-08 to Hd-04.  
Hold the button for 3 seconds to  
go back to the Fuel type setting  
screen.



Fuel type setting screen, Press  
the button once to enter the Clock  
setting screen.



#### 4-4 Backlight setting



Hold the button for 3 seconds to enter the Backlight settings screen.



EX. To change the setting to rEd (Red). Press the button to choose the setting number.

**NOTE** Default:bLUE (Blue)

⚠ Now the default is flashing

**NOTE** Setting range:bLUE (Blue) / rED (Red).



EX. Now the setting is changed from bLUE (Blue) to rEd (Red). Hold the button for 3 seconds to enter the Backlight settings.



EX. You want to set the backlight at 3-5 (60%). Press the button to choose the setting number.

**NOTE** Default:5-5

⚠ Now the default is flashing

**NOTE** Setting range:1-5(Darkest)~5-5 (Brightest),5 different levels available. Setting unit:20% per level. The backlight brightness will change immediately after you set the value.



EX:The backlight setting is changed from 5-5 (100%) to 3-5 (60%). Hold the button for 3 seconds to go back to the Backlight clock settings screen.



Backlight clock settings screen, Press the button once to enter the circumference percentage settings screen.



#### 4-5 Circumference percentage settings



☒ Hold the button for 3 seconds to enter the circumference percentage settings screen.



☒ EX. To change the setting to 150%. Press the button to move to the digit you want to set.

**NOTE** Default:50.

⚠ Now the default is flashing

**NOTE** Setting range: 50~210 %



☒ Press the button to choose the setting number.



☒ EX. Now the setting is changed from 100% to 150%. Hold the button for 3 seconds to go back to the circumference percentage settings screen.



☒ In the circumference percentage settings screen, Press the button once to enter in the Odometer settings screen.



#### 4-6 Odometer display

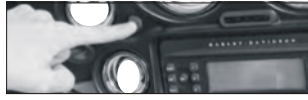


☒ Odometer display screen, Press the button once to enter in the external odometer setting screen.



#### 4-7 External odometer setting

- ☒ Hold the button for 3 seconds to enter the External odometer settings screen.



- ☒ EX. Set the External odometer to 3000 km.
- ☒ Press the Select button to move to the digit you want to set.

**NOTE** Default:000,000km(mile)

⚠ Now the default is flashing

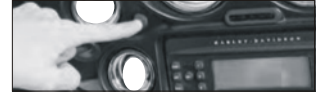
**NOTE** Display range:000,000~999,999 km (mile)



- ☒ Press the button to choose the setting number.



- ☒ EX. The External odometer setting has been changed from 0 km to 3,000 km.
- ☒ Hold the button for 3 seconds to go back to the External odometer display setting screen.



- ☒ External odometer display setting screen.
- ☒ Hold the button for 3 seconds to go back to the External odometer display setting screen.



- ☒ The main screen.

## 5 Troubleshooting

The following situation does not indicate malfunction of the meter. Please check the following points before taking it in for repairs

Trouble	Check item
The meter doesn't work when the power is on.	<ul style="list-style-type: none"> <li>☒ The power doesn't supply to the meter.                             <ul style="list-style-type: none"> <li>☒ Please make sure the wires are connected. Make sure the wires and fuse are not broken.</li> <li>☒ Make sure the battery is not broken or the battery is too old to supply enough power <b>DC 12V</b> to make the meter work.</li> </ul> </li> </ul>